

The Observer's Challenge Objects

Submitted by Larry McHenry, Pittsburgh, PA. USA. <http://stellar-journeys.org>

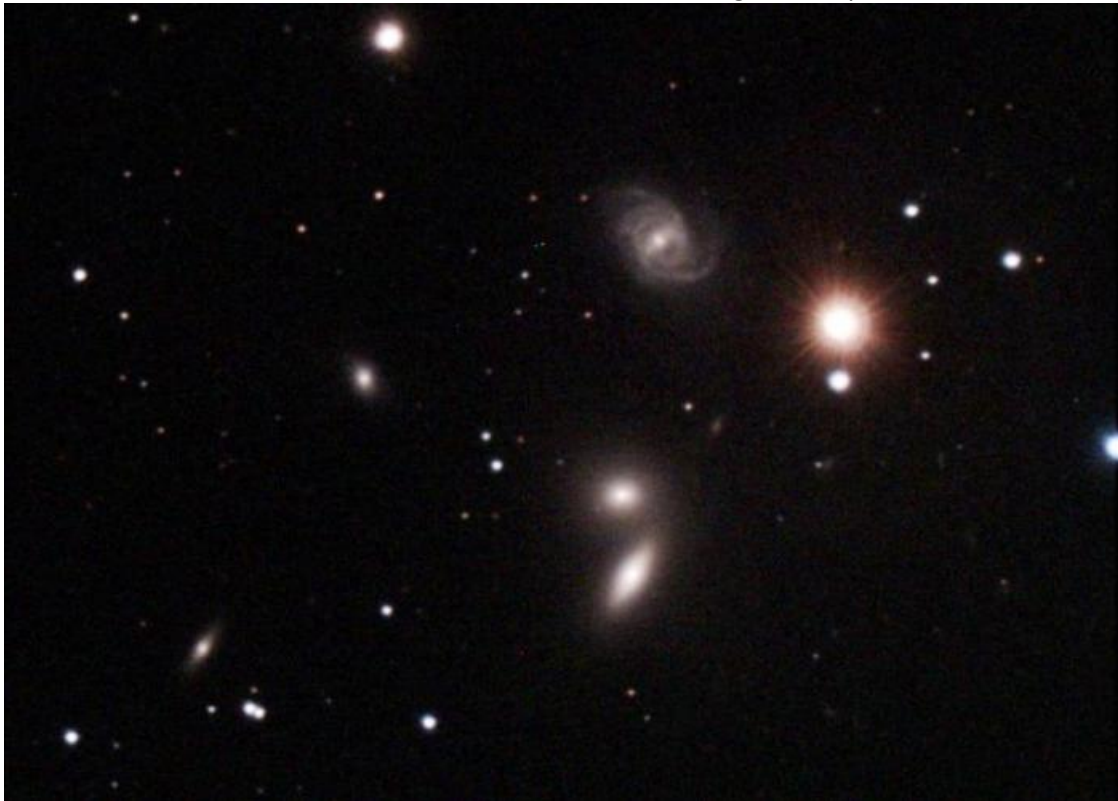
May: **NGC 5350** – galaxy group (**Hickson 68**) – Canes Venatici; mag_v=10.9;
RA: 13h 53m 1.5s Dec: +40° 21' 49"

Hickson 68, located in the spring constellation of Canes Venatici - 'The Hunting Dogs', is a galaxy cluster of several bright NGC galaxies, with the SO lenticular galaxy NGC5353 being the brightest at +10.9. Other members include spiral **NGC5350**, (+11.3 and largest member) and ellipticals NGC5354 and NGC5355, and lenticular NGC5358. Of interest, NGC5353 appears to be close to and possibly in the process interacting with NGC5254. Nearby galaxy **NGC5350** is a barred-spiral Seyfert galaxy with a highly active galactic core. NGC5350 is about 107 million light-years distant, with a diameter of about 100,000 ly.

NGC5350, NGC5353, etc, were cataloged as entry #68 by Paul Hickson in 1982 as part of his compact galaxy cluster research project. Both **NGC5350** (H2 713) and NGC5353 (H2 714) were discovered on the night of January 14th, 1788 by William Herschel using his 20 ft reflector at his home in Slough, near Windsor Castle.

Video-Capture/EAA:

06/14/2023, from the Cherry Springs Star Party, using an 8" SCT optical tube @ f6.3 on a GEM mount, with a CMOS color camera and broadband filter, 180-second guided exposure, live-stacked for 15 min.



Barred spiral **NGC5350** is located near the 6th magnitude star HD121197 which somewhat interferes with observing the group. Using EAA observing techniques, Face-on spiral NGC5350 has a bright core with a broad bar structure that has several long dusty spiral arms coming off either end. NGC5353 is an unresolved lenticular spindle that gradually brightens towards its center, while close by is the mostly unresolved elliptical NGC5354 with a diffuse halo and bright core. The edges of the pair appear to be blending with one another. Lying further away from the main trio is the small elliptical NGC5355, and another lenticular NGC5358.