

The Observer's Challenge Objects

Submitted by Larry McHenry, Pittsburgh, PA. USA. <http://stellar-journeys.org>

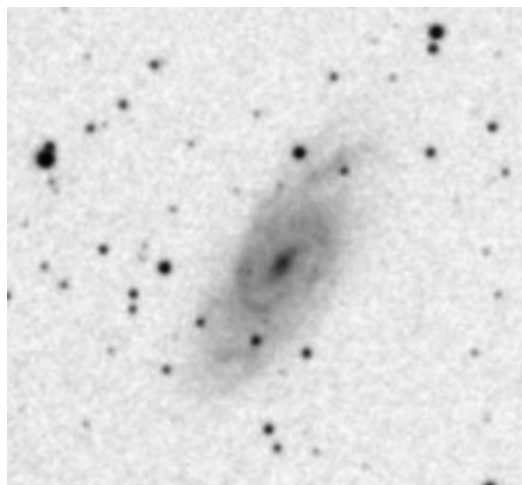
June: **NGC 6118** – Serpens; mag_v=12.4; RA: 16h 21m 48s Dec: -02° 17' 00"

NGC6118, is located in the spring constellation of Serpens Caput - "The Serpent", and is a SA 'Grand Design' Spiral at magnitude +12.4. The galaxy is about 83 million light-years distant, with a diameter of about 110,000 ly.

NGC6118 (H2 402) was discovered on the night of April 14th, 1785 by William Herschel using his 20 ft reflector at his home's back garden in Datchet. NGC6118 is considered to be one of the hardest Herschel 400 objects to observe visually. The moderately inclined, large, low-surface brightness galaxy is located near the bright star HD147550. It is nicknamed the "Blinking Galaxy" by amateurs, and requires nights of good transparency and use of averted vision to see.

EAA Observation:

06/06/2024, from the Cherry Springs Star Party, using an 8" SCT optical tube @ f6.3 on a GEM mount, with a CMOS color camera and broadband filter, 180-second guided exposure, live-stacked for 12 min. Widefield and cropped negative.



SA galaxy NGC6118 is located near the 6th magnitude star HD147550 which somewhat interferes with observing the group. Using EAA observing techniques, the moderately inclined spiral has a bright central core from which two bright spiral arms can be traced. Several thin dark lanes and HII knots can be seen.