

## *The Observer's Challenge Objects*

Submitted by Larry McHenry, Pittsburgh, PA, USA. <http://stellar-journeys.org>

May: **M106** – Galaxy – Canes Venatici;  $\text{mag}_v = 8.4$ ; Size =  $18.6' \times 7.2'$   
RA: 12h 19m; Dec:  $+47^\circ 18'$

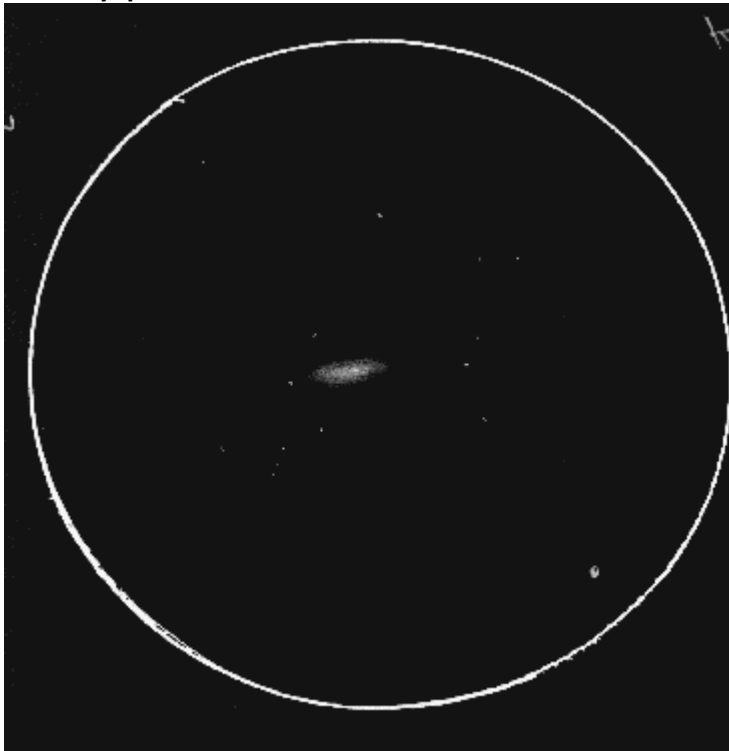
---

### **M106:**

Located in the spring constellation of Canes Venatici, 'The Hunting Dogs', spiral galaxy M106 was discovered by Charles Messier's associate Pierre Mechain in July of 1781, and is located near the 5<sup>th</sup> magnitude star 3 CVn. It is about 24 Million light years distant, and is estimated to have a diameter of about 135,000 light years.

Visually in the telescope, M106 has a large inclined oval shape with a bright central core, and star-like nucleus.

### **Visual Eyepiece Sketch:**



06/09/1991 from amateur observatory near Pittsburgh, PA, using an 8" f4.5 Dob Reflector and 16mm eyepiece (57x).

Using EAA techniques, M106 displays nicely in any type of optics. It is a fairly bright inclined spiral, displaying dark lanes and knots, with tight diffuse arms on either end of the elongated galaxy's core.

**Video-Capture/EAA:**



05/09/2016: from Cherry Springs State Park, PA, with an 8" SCT @ f6.3 on a CGEM Mount, using an analog video-camera & IR filter @ 35 seconds, unguided single exposure.