

## **The Observer's Challenge Objects**

Submitted by Larry McHenry, Pittsburgh, PA.

### **April: NGC 3226/27 – Interacting Galaxies – Leo**

RA: 10h 23m Dec. +19° 54' (NGC 3326) Mag. V=11.4; sfc. br. 13.3; Size 2.8' x 2.0'

RA: 10h 24m Dec. +19° 52' (NGC 3327) Mag. V=10.3; sfc. br. 13.1; Size 4.1' x 3.9'

---

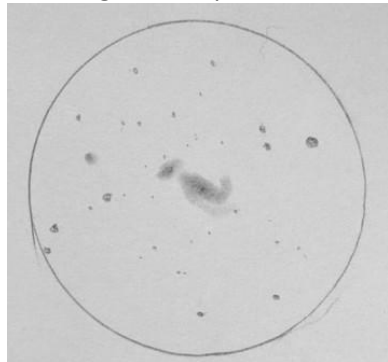
### **NGC 3226 & 3227**

Is a pair of interacting galaxies located in the spring constellation of Leo - 'The Lion', about 48 arc seconds east from the bright mag +2.6 star Algieba (Gamma Leonis). NGC3227, at +10.3 Mag, is a spiral in the process of merging with +11.4 Mag dwarf elliptical galaxy NGC3226. Both galaxies have an Active Galactic Nucleus (AGN) fueled by a suspected black hole in each. The pair is about 77 million light years distant. NGC 3226/3227 is listed as Arp94 in Halton Arp's 'Atlas of Peculiar Galaxies' under his "Spiral Galaxies with Elliptical Companions" section.

### **Visual Screen Sketch:**

03/02/2021 from Big Woodchuck Observatory backyard in Pittsburgh, PA.

Using an 8" SCT optical tube @ f6.3 on a GEM mount, with a CMOS/USB color camera and LP filter @ 60-second guided exposure livestacked for 30 minutes.



West is @ top of sketch

Visually, NGC3227 is the larger of the two galaxies displaying spiral arms looping to the east and north. Both galaxies have star-like cores. Bonus galaxy NGC3222 at +12.8 Mag is nearby to the SW and visible in the same FOV.

### **Video-Capture:**

04/24/2014 from Cherry Springs State Park, using an 6" RC optical tube @ f5 on a GEM mount, with an analog deep-sky video-camera & IR filter @ 25 seconds, single exposure.

